



AK 306 SALT STREAKS FOR SHIPS

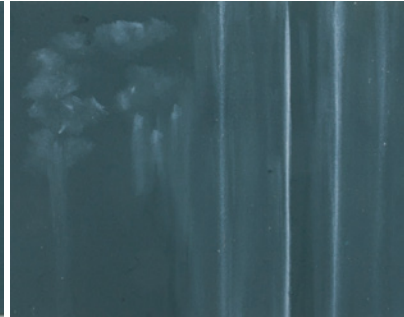
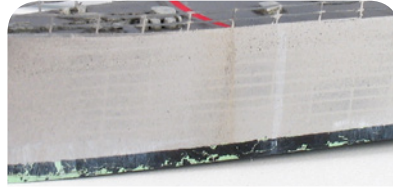
With this enamel product the modeler may easily represent streaking effects left by salt on vertical surfaces of any ship.



VIDEO



SHOP



This is an essential product for all ships as this effect always appears and it is very easy to use. It is applied over the areas of the spouts.



Apply the product in a vertical way from the spout.



With a flat brush dipped in White Spirit start to blen and soften the stroke. Remember the flow direction of water to achieve more realism.



The salt not only appears on spouts but also accumulates in the lower parts of the hull next to the sea.

