



# GAUZY AGENT



## TRANSPARENCY AND SHINE ENHANCER TUTORIAL

A new FUTURE opens up for modelers. AK's R&D department, in its constant desire for evolution, has developed two new products specially designed to cover the modelers needs. Two different products for different solutions. We are very proud of the results. One of them as a transparency agent and the other as a shine enhancer.



### AK893 GLASS COAT GAUZY AGENT



High quality product developed to enhance, repair, and achieve extremely realistic transparent glass-like finishes on clear plastic parts. Simply dip and let dry for a few minutes. Clean excess of product around the edges to achieve a uniform layer. For best results, allow product to dry in a dust-free environment. This product, when applied to clear plastic, will result in a realistic glass-like appearance of parts like clear plastic cockpit canopies or other clear parts.





Clean the piece to remove all dust and fingerprints. We can use tweezers or fix the piece temporarily for better handling. It is important to work on dust-free environment.



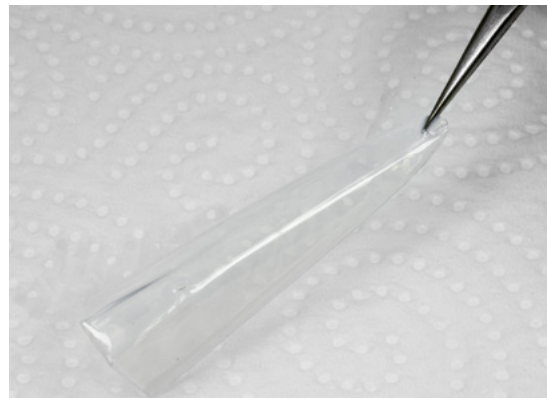
Dip the piece for a few seconds making sure the liquid reaches all crevices.



Take out the piece letting it drain and making sure there are no bubbles.



Dry the excess product leaning it over a paper cloth or similar making sure the product does not accumulate too much in one area.



During the drying time it is recommended to leave the piece to dry protected to avoid the dust sticking on it. If we find ourselves having that problem we must clean the piece with alcohol and repeat the process again.



## Notes:

The drying time may vary depending on environmental conditions, although it can be manipulated after 30 minutes it is advisable to let it dry for several hours. A good planning of your work and avoiding rushing will help.

Keep in mind that when drying, the product is highly adherent and the piece can get stuck where we let it dry. So you have to be careful to move it from time to time during the first minutes of drying or left in a place so that the bearing surface is minimal.

AIRCRAFT CONTROL PANEL



In this tutorial we will show you how to apply it to this control panel. You will not believe how easy it is!!



First assemble the small pieces and glue the decal and photo-etched parts to its position.



Let dry the glued parts for a few minutes.

And simply apply Gauzy Agent Glass Coat over the dials of the control panel with a fine brush to make them look as if they had a crystal layer over them.



Finally paint the control panel as you normally would. And check out the result..  
ASTONISHING!!





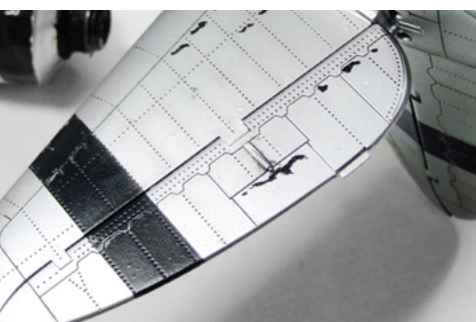
### AK894 INTERMEDIATE GAUZY AGENT

High quality product to create a protective and very realistic glossy sheen to areas where applied. This product also serves as a protective layer for the paint underneath. Apply it in the same way you would apply any varnish. Then let it dry for a few minutes. This product can also serve as a perfect finishing touch for metallic paints such as AK Interactive Xtreme Metal. Apply Gauzy Agent to any single part or sections of your model that are begging for an incredible transparent shine. It possesses self-leveling properties and can be applied with brush or airbrush.

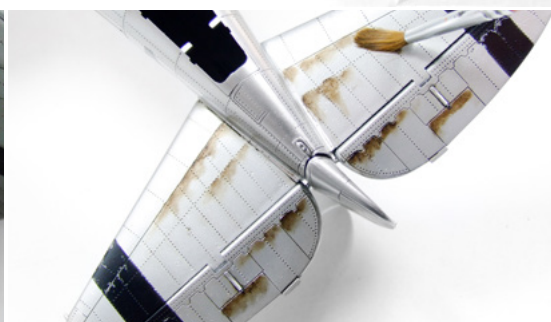


Airbrush a general layer over the whole model using a 0.2 nozzle and at 1,5 Kg of pressure.

Intermediate Gauzy also creates a more resistant layer over metallic paints such as the XTREME METAL range without making lose gloss. It also allows to apply any weathering with oils or enamel products erasing the risk of damaging the previous layer.



After only 5-10 min, Intermediate GAUZY is completely dry and ready for further effects.



Apply small oil amounts strategically and then start blending them in the direction of air flow.



Intermediate Gauzy has a great resistance and allows to use oils without any fear.

**BOMB TUTORIAL**



Bombs ready after the base painting phase.



Airbrush an overall layer of Intermediate Gauzy over the models using a 0.2 nozzle and 1.5 kg pressure.



After 5-10min letting the product dry, I apply a mixture of two different oils from different brands.



I keep on with the use of a third oil.



With a fine brush I mix the oil colors over the surface.



With a flat wide brush, blend the oils until they merge perfectly.



With White Spirit I make small chips over the oil and the Intermediate Gauzy holds up perfectly.



I keep on with use of other weathering products as a dark brown wash as splatters.



And other dust effects which again are applied as splatters.



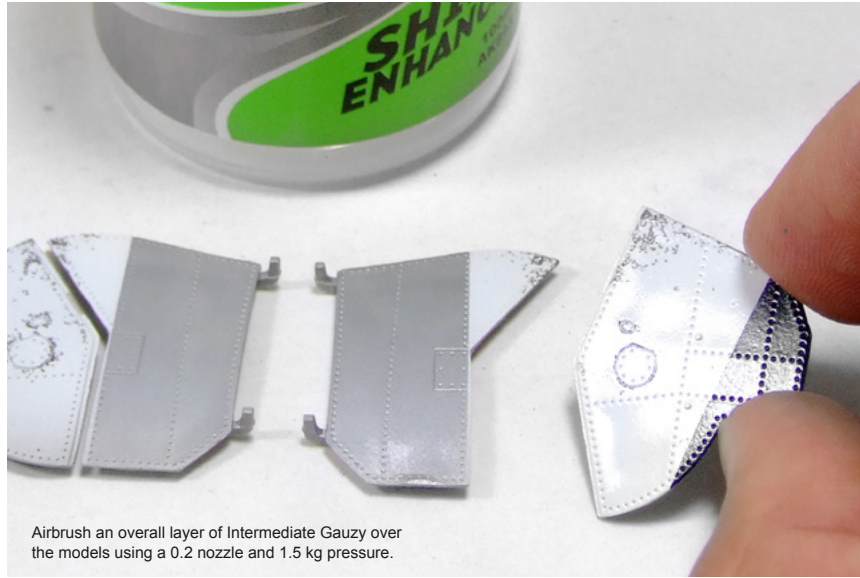
I seal the whole process with another layer of Intermediate Gauzy. And when dry I give the final layer of Ultra-Matt varnish.



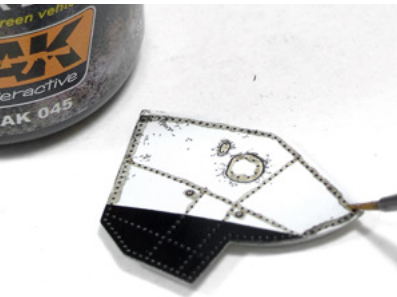
**SMALLER PIECES TUTORIAL**



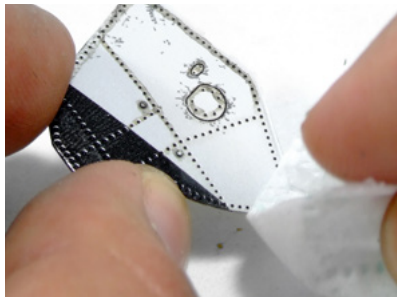
Painted pieces ready for the weathering process.



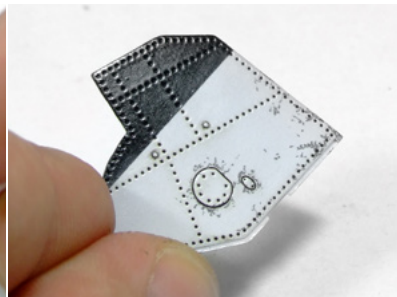
Airbrush an overall layer of Intermediate Gauzy over the models using a 0.2 nozzle and 1.5 kg pressure.



After 5-10min of drying, I apply the first weathering products. A dark brown wash in this case.



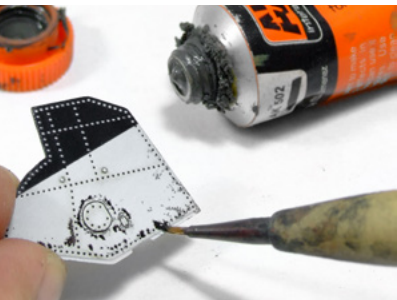
After other 5-10min, carefully, remove the wash with a cloth.



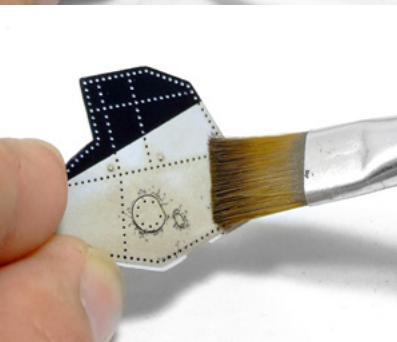
Aspect of the piece after removing the wash completely. We can see there are no furrows of the wash along the rivet lines.



Over the same piece I apply another product. A paneliner this time,, making the same process as with the wash.



Now with a brush I apply several dots in strategic areas of the piece.



I start blending the oil with a fine brush controlling the direction of the stains.



I finish the process by applying a new layer of Intermediate Gauzy over the oils, and when dry I apply a coat of Ultra-Matt varnish to get the desired finish.

